

A Phased-Implementation Feasibility
and Proof-of-Concept Study to
Assess Incorporating the NIDA CTN
Common Data Elements into the
Electronic Health Record in Large
Primary Care Settings
(CDE-EHR-PC Study)
CTN 00620t

Introductions

- Jennifer McNeely, MD, MS
 - Lead Investigator, GNY Node
 - NYU School of Medicine
- Joseph Kannry, MD
 - Co-PI and Lead Technical Informaticist
 - Icahn School of Medicine at Mt. Sinai
- Andre Kushniruk, PhD, MSc, FACMI
 - Human-computer interactions consultant
 - University of Victoria

Outline of today's talk

1. Brief overview of the CTN-0062 study
2. Introduction to usability
3. Usability testing data collection and analysis
4. Lessons learned

Overview

- Background: NIDA Common Data Elements project selected standardized substance use measures for EHRs
- Study Design: 4-phase implementation study of incorporating the NIDA CDEs plus clinical decision support, integrated with the electronic health record (EHR)
- Setting: Primary care clinics in 3 large health systems
 - Mount Sinai Health System (NY)
 - Partners/MGH (MA)
 - OHSU(OR)

Study Phases

Phase 1 - Identify optimal screening and intervention approaches
- Build CDEs into the Epic EHR



Phase 2 - Usability testing of screening and CDS tools
- Implementation planning at Clinic A



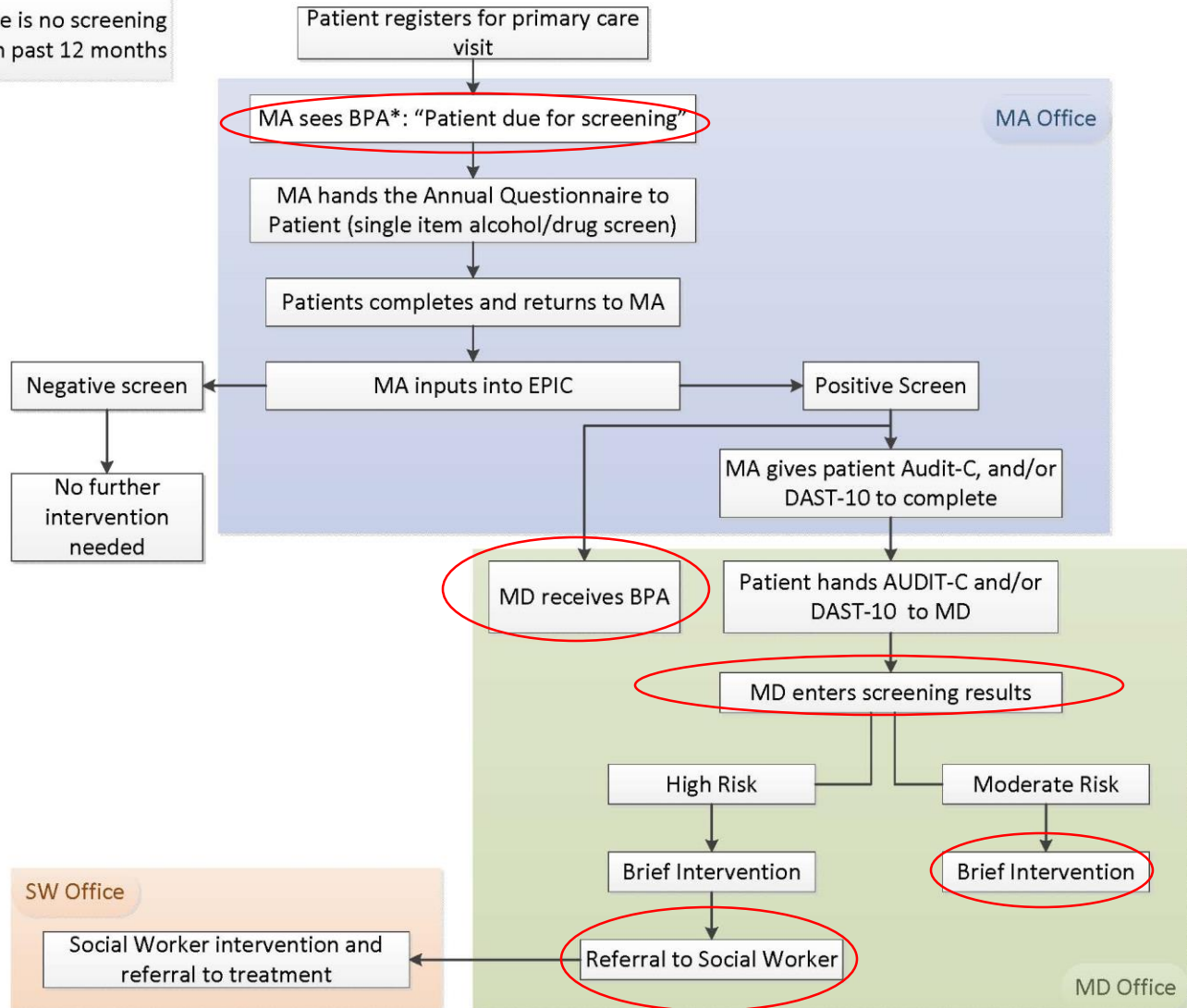
Phase 3 - Implementation at Wave 1 clinics
- Measure implementation outcomes



Phase 4 - Implementation at Wave 2 clinics
- Measure impact at patient, provider, and systems level

Workflow

* BPA if there is no screening result in past 12 months



Usability Testing Process

Round 1

- Screening BPAs, SmartText for BI, SW referral
- Faculty, Residents, MAs

Round 2

- Refined BPA for SW referral,
- Faculty, Residents

Round 3

- SmartSet for BI and SW referral
- Faculty, Residents