

CTN WEB SEMINAR SERIES: A FORUM TO EXCHANGE RESEARCH KNOWLEDGE



National Drug Abuse Treatment
Clinical Trials Network

You've Located an Incarcerated Participant—What's Next?



Presented by:
Peter Greco, MPH
NYU School of Medicine
Greater New York Node



This training has been funded in whole or in part with federal funds from the National Institute on Drug Abuse, National Institutes of Health, Department of Health and Human Services, under Contract No. HHSN271201500065C.

CTN WEB SEMINAR SERIES: A FORUM TO EXCHANGE RESEARCH KNOWLEDGE

- How to prepare for and conduct successful study visits with incarcerated participants
- Special considerations research teams should keep in mind:
 - Confidentiality
 - Professional conduct in correctional setting
 - Data collection
 - Safety



Discussion Objectives

You've Located an Incarcerated Participant—What's Next?



2



Contact facility

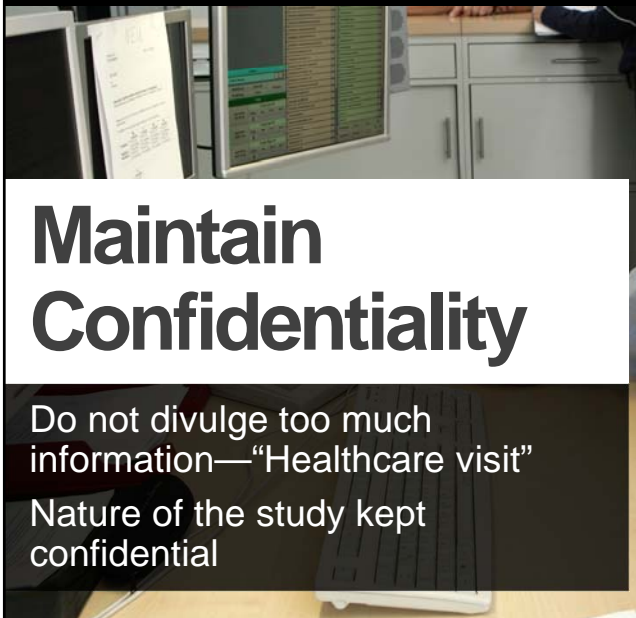
Gaining access to the facility

- Professional visits vs. family/friends visiting hours
- Call local facilities to obtain a reliable contact
- Tap/utilize colleagues who have experience working with criminal justice population

You've Located an Incarcerated Participant—What's Next?



3



Maintain Confidentiality

Do not divulge too much information—"Healthcare visit"
Nature of the study kept confidential

You've Located an Incarcerated Participant—What's Next?



4



Confirm Confidentiality

Ensure no audio/video recording
Obtain facility rules for visits

You've Located an Incarcerated Participant—What's Next?



You've Located an Incarcerated Participant—What's Next?



Leading up to the visit

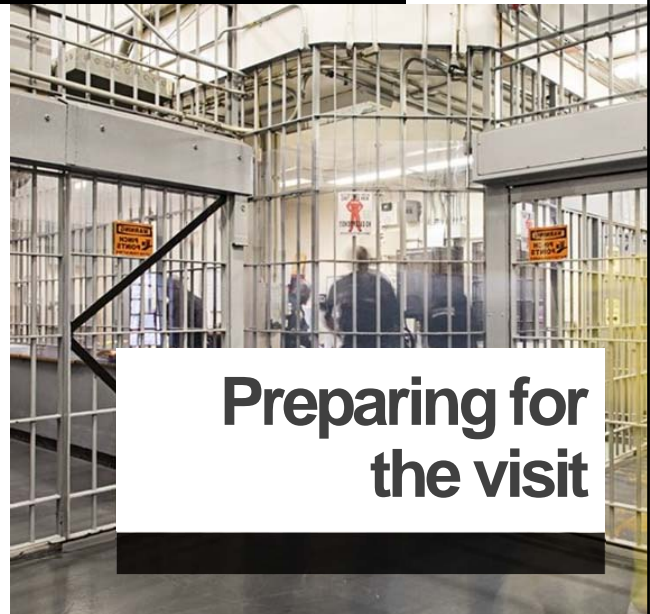
- Stay in touch with facility contact leading up to visit day to troubleshoot any issues or to resolve any questions
- Repeat database search to ensure participant is still at facility
- Map out route

You've Located an Incarcerated Participant—What's Next?



7

- Be prepared to follow all rules of correctional facility: contraband, dress code, parking/ transportation, ID, lockdown procedures
- Paper CRFs (and all existing data/PHI) will stay at study site
- Bring reading material, snacks, etc.
- Keep the study site staff updated



Preparing for the visit

You've Located an Incarcerated Participant—What's Next?



8

On the day of the visit

Ensure that your research space is appropriate for conducting a study visit

You've Located an Incarcerated Participant—What's Next?

- Be prepared to conduct the visit based on the protocol schedule of assessments
- Prioritize critical assessments in case of time limitations
- Have on hand UDS supplies for biological specimen collection, testing procedures, and disposal
- Use caution with TLFB data and other reference data for assessments

On the day of the visit

You've Located an Incarcerated Participant—What's Next?

- What options are available to the participant?
 - Deposit into commissary account
 - Send via money order to a family member in community
 - Keep at study site for pick-up upon release



Discuss Compensation

Last thoughts...

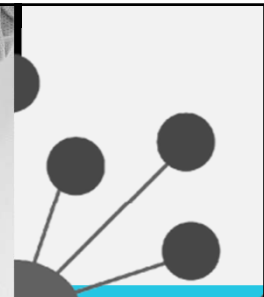
FAQs

- Is it safe?
 - How long will it take?
 - How do I stay in touch with participant/schedule next visit?
 - What about a phone visit from jail?
- Make contact with the prison facility
 - Prepare ahead of the visit
 - Maintain participant's confidentiality
 - Adhere to facility rules and maintain a good rapport with facility staff
 - Always be professional within correctional facility setting
 - Be prepared for data and biological specimen collection
 - Safety first
 - Follow exit protocol for the facility



Contact...

Peter Greco, MPH
Peter.Greco@nyulangone.org
Greater New York Node



Thanks for your participation.

